

# RM1

## Miniature precision regulators for compressed air and medical gases

M5, G1/8 or Cartridge style

### Miniature high performance regulator

Suitable for oxygen service

compliant to: BS EN ISO 15001:2011  
BS EN ISO 10524-4:2008  
RoHS

Precision pressure regulation

Excellent flow, pressure drop and hysteresis

Cartridge design for manifold integration

Design registration number:  
000362165-0001/0002



### Technical features

**Medium:**

Compressed air and medical gases

**Maximum inlet pressure:**

10 bar

**Standard pressure range:**

0 ... 0,35 bar

0 ... 2 bar

0 ... 2,75 bar

0 ... 4 bar

**Port size:**

M5 or G1/8 (Body version)  
Alternative cartridge style

**Flow range:**

200 l/min - RM1L

500 l/min - RM1H

(P1 0 10 bar & P2 = 2 bar)

**Ambient/Media temperature:**

-5 ... +95°C

Air supply must be dry enough to avoid ice formation at temperatures below +2°C

**Wetted materials:**

Housing: Aluminium

Polymers: PPS (FDA compliant)

Elastomers:

FPM (FDA compliant)

Metal components:

Stainless steel & Aluminium

### Option selector

RM1★-★★★-N★V

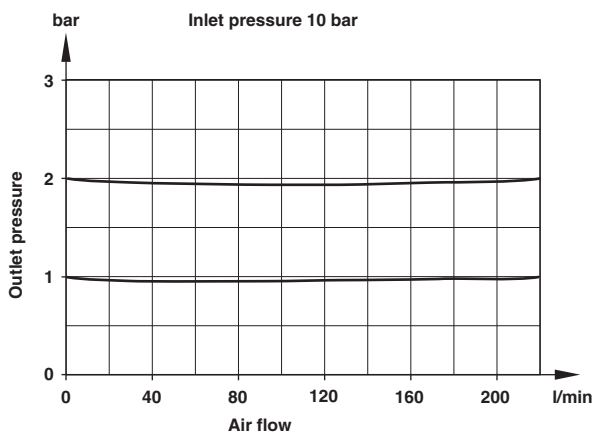
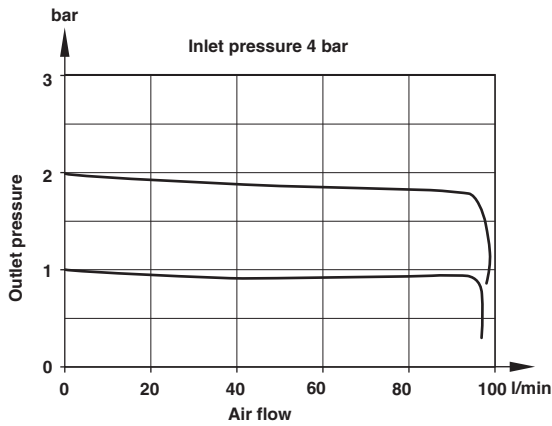
Type	Substitute
Low flow	L
High flow	H
Type	Substitute
Body M5	5M
Body G1/8	1G
Cartridge style	NN

Springs	Substitute
0,35 bar	A
2,00 bar	C
2,75 bar	D
4,00 bar	F
Adjustment	Substitute
Not preset	D
Preset	S

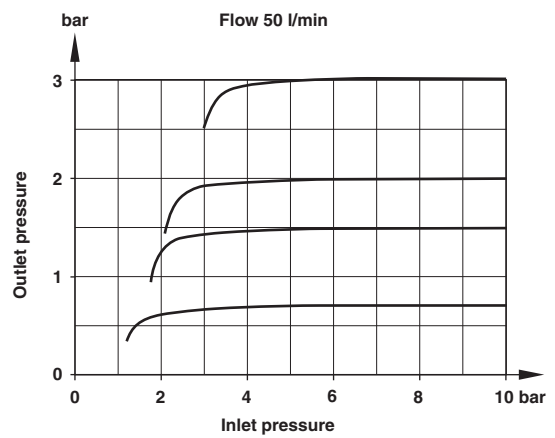
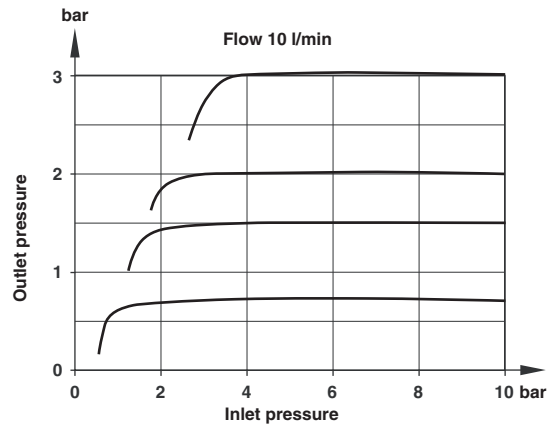
Note: For pre-set units the following information is required:  
Primary pressure ± Tolerance  
Pre-set pressure ± Tolerance  
Setting flow ± Tolerance

**Flow characteristics**

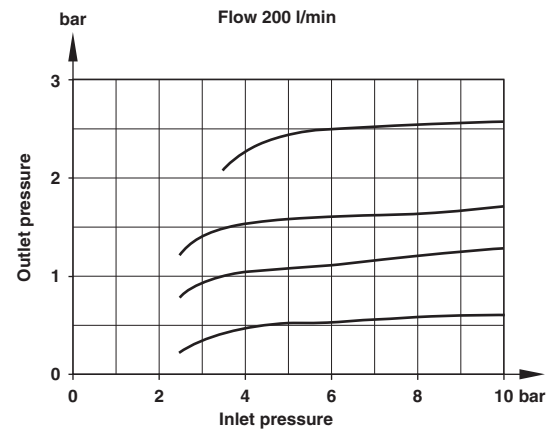
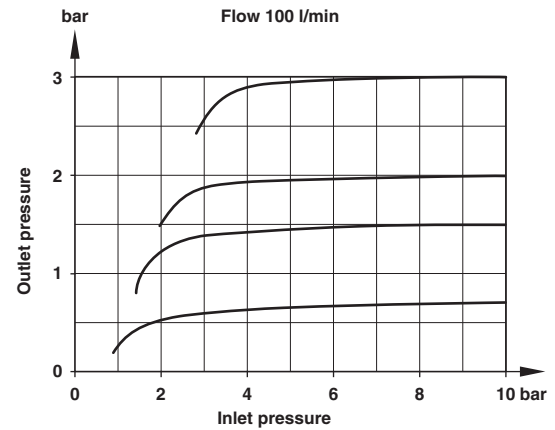
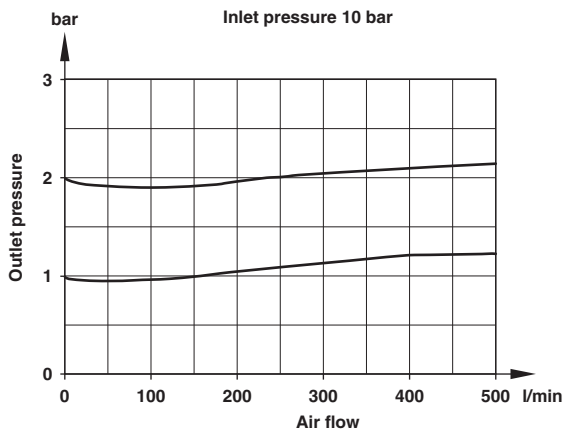
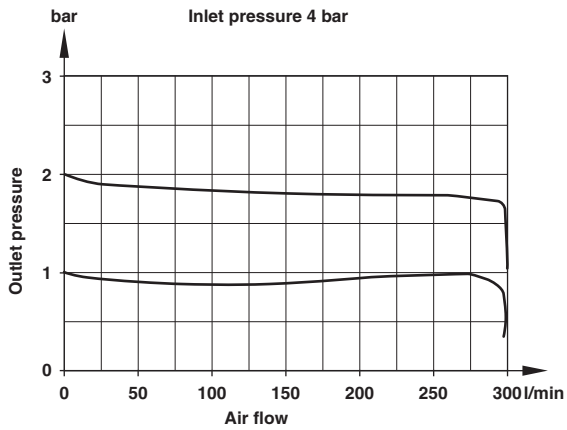
Type: RM1L...

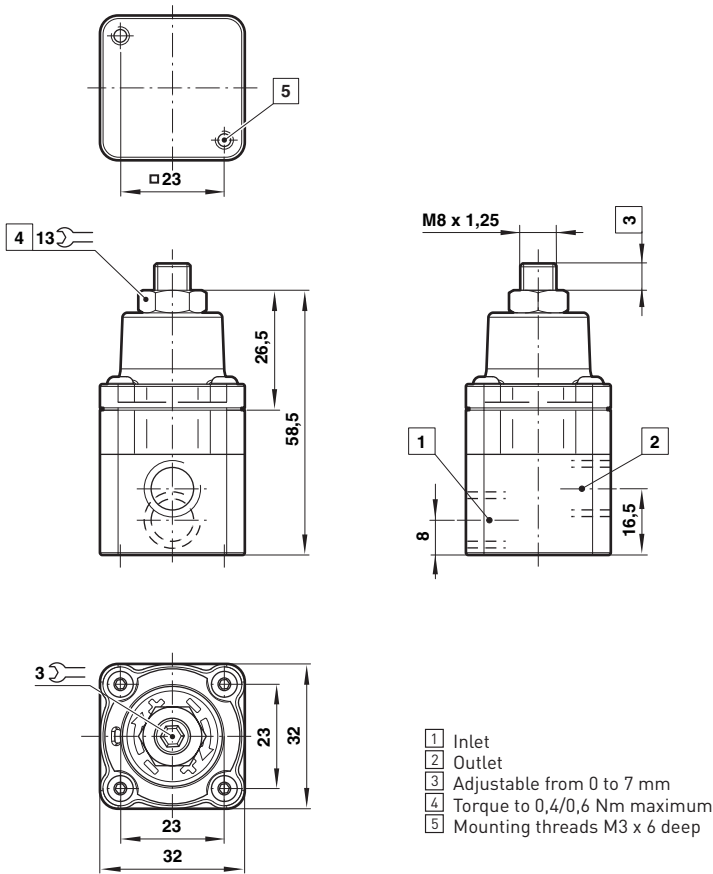
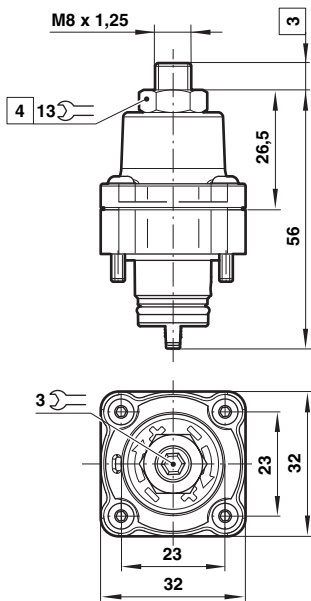


**Regulation characteristics**

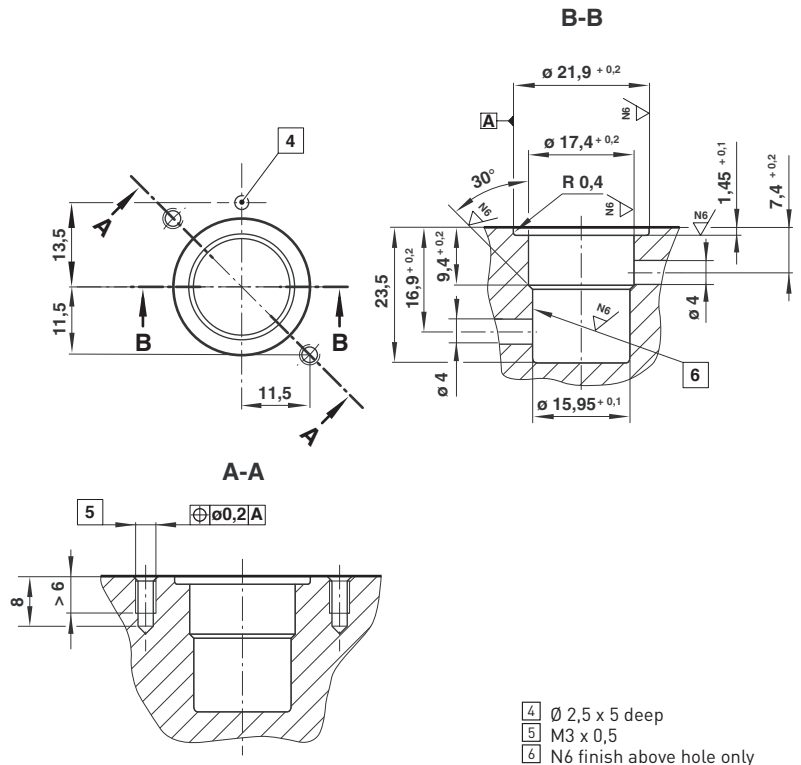


Type: RM1H...



**Basic dimensions**
**Body version**

**Cartidge style version**


- 3 Adjustable from 0 to 7 mm  
 4 Torque to 0,4/0,6 Nm maximum

**Installation dimensions**


## Warning

These products are intended for use in life sciences & medical applications with compressed gases only. Do not use these products where values can exceed those listed under '**Technical features**'.

Before using these products with fluids other than those specified or other applications not within published specifications, consult NORGREN.

Through misuse, age, or malfunction, components used in fluid power systems can fail in various modes.

The system designer is warned to consider the failure modes of all component parts used in fluid power systems and to provide adequate safeguards to prevent personal injury or damage to equipment in the event of such failure.

System designers must provide a warning to end users in the system instructional manual if protection against a failure mode cannot be adequately provided.

System designers and end users are cautioned to review specific warnings found in instruction sheets packed and shipped with these products.